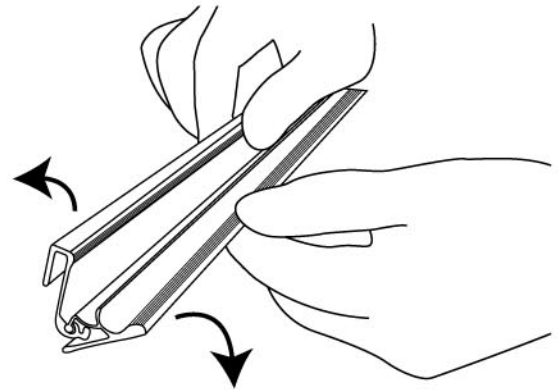
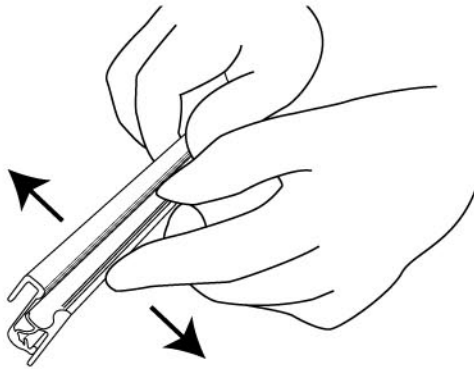


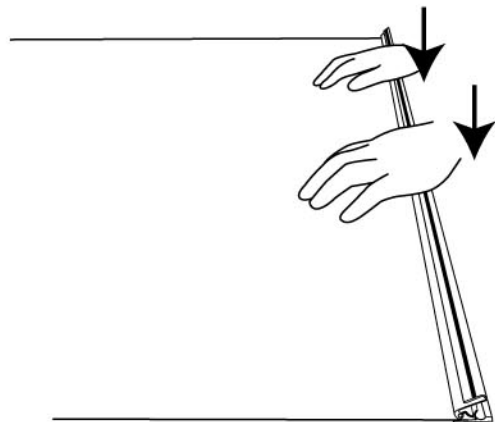
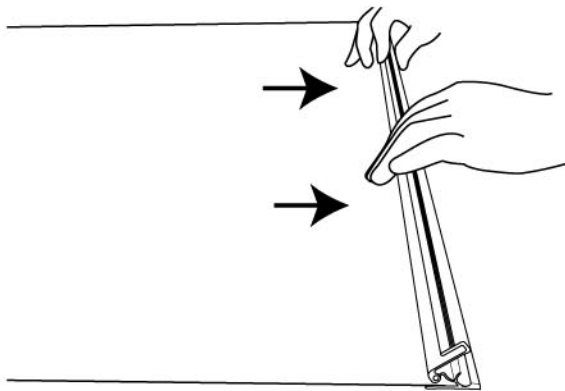
MOUNTING GRAPHIC

With Snap Profile and Snap Roller (P.1)

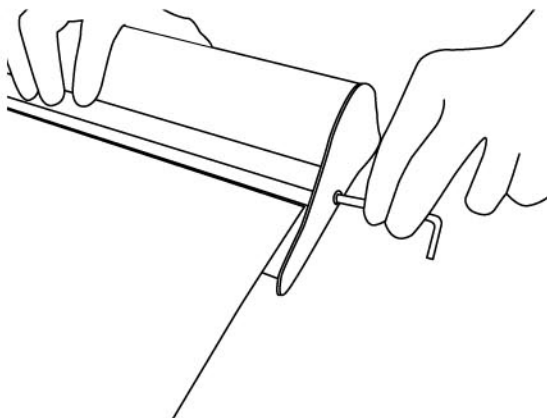
1. Open the snap profile near the end without any tools.



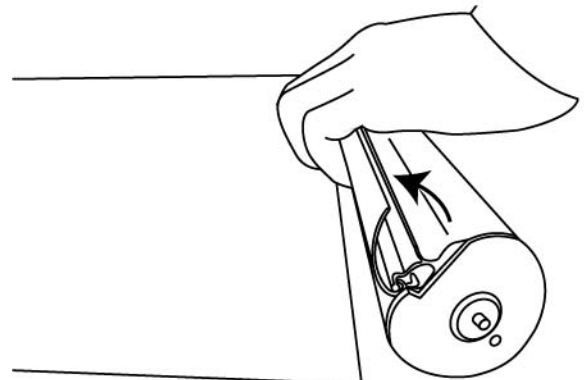
2. Insert the graphic into the profile and press hard.



3. Open the cover by unscrewing at both ends with an allen key and take out the internal roller.



4. Open the snap roller.

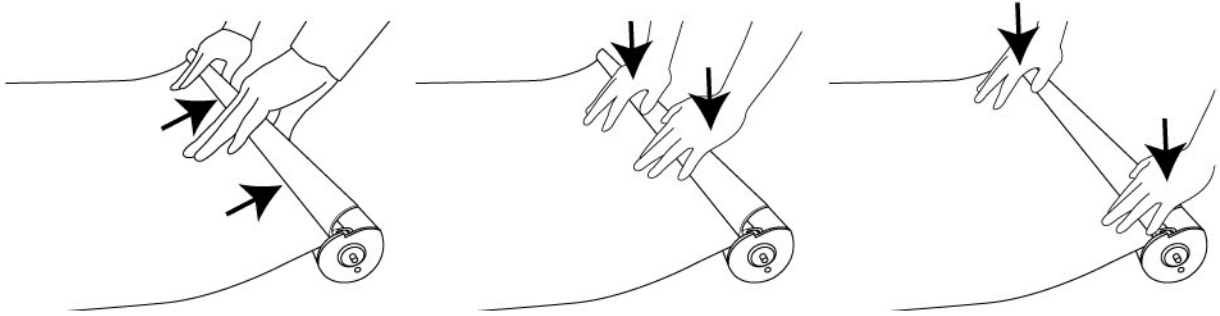


MOUNTING GRAPHIC

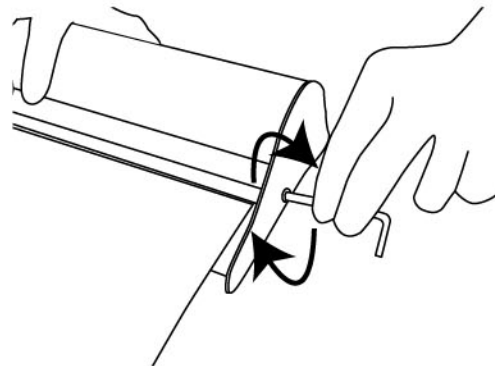
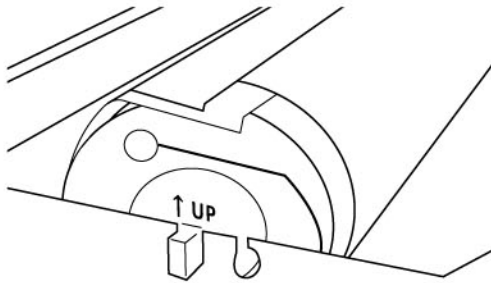
With Snap Profile and Snap Roller (P.2)

5. Insert the graphic into the snap roller and press hard along the entire roller until it's firm.

IMPORTANT!

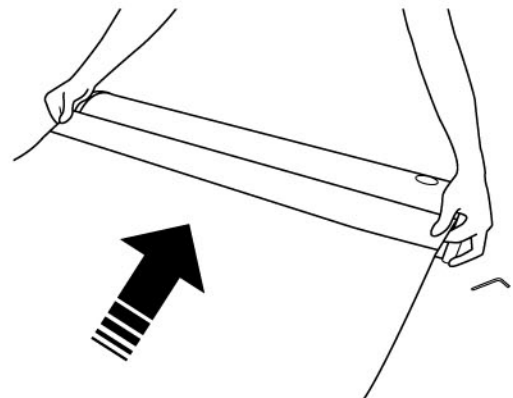
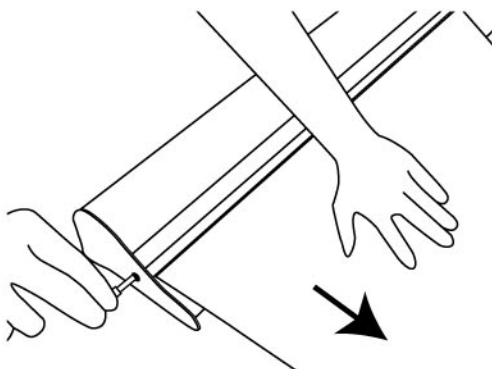


6. Return the roller with graphic into the base. Let the entire graphic lay outside the base. Close the cover and screw at both ends.



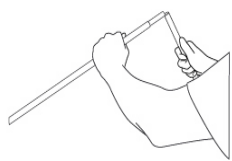
CAUTION:Note the ↑ up sign.

7. Push the graphic forward slightly to activate the spring system. Remove the locking pin and let the graphic retract into the system slowly.

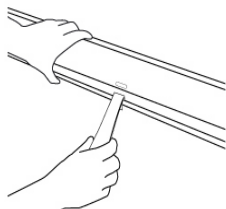


Set up instruction

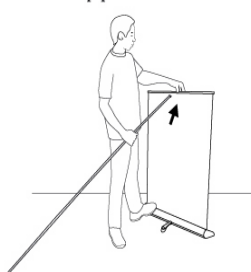
1. Unfold the 3-parted pole.



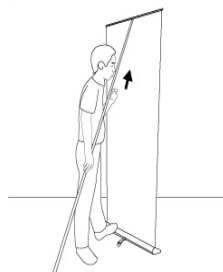
2. Lock the foot onto the slot of the base by lifting up the base.



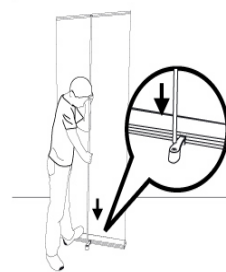
3. Pull up the graphic and position the plastic end tip of the pole into the top profile.



4. Hold the pole with both hands and push up the graphic.

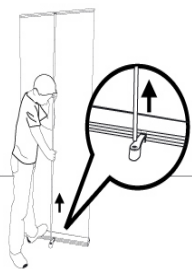


5. Insert the pole onto the cup of the Mini foot. Done!

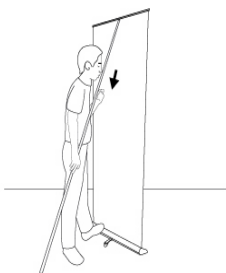


Dismantle instruction

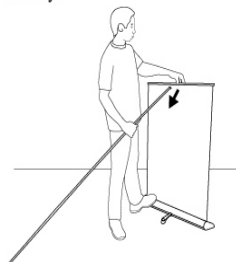
1. Pull out the pole from the cup of the Mini foot.



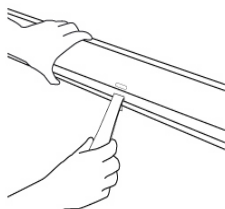
2. Move the pole backward to let the graphic starts retracting.



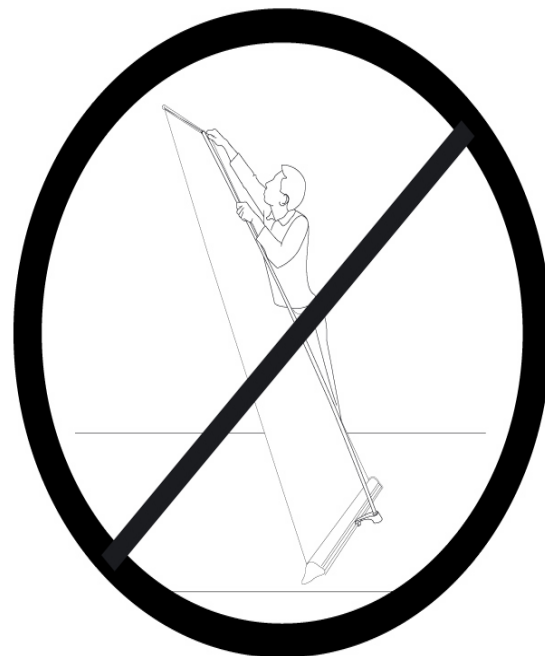
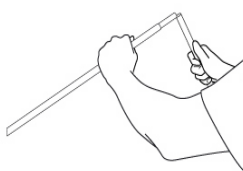
3. Hold the top of the graphic and detach the pole from the top profile. Let the graphic retract slowly.



4. Detach the Mini foot from the base.



5. Fold the 3-parted pole.



Don't tilt the stand forward when doing set up or dismantle.