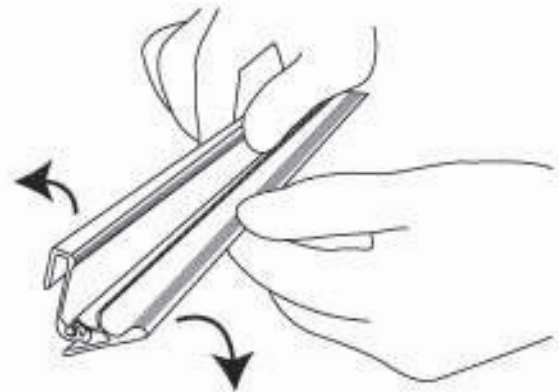
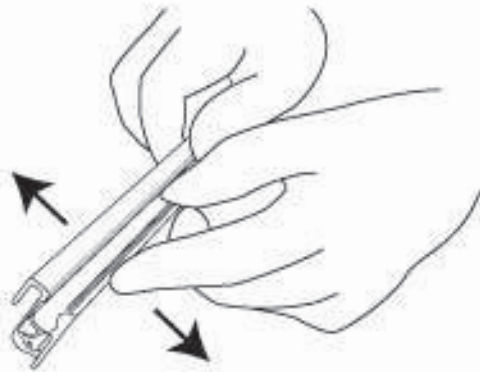


# **MOUNTING GRAPHIC**

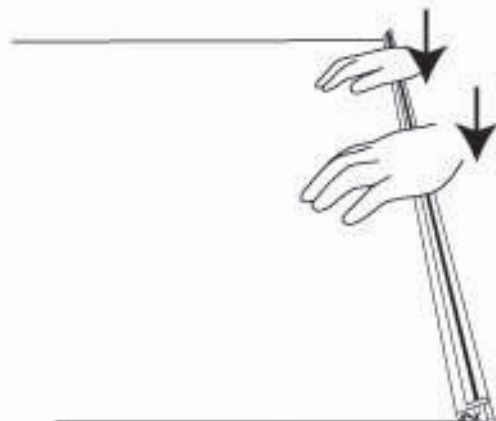
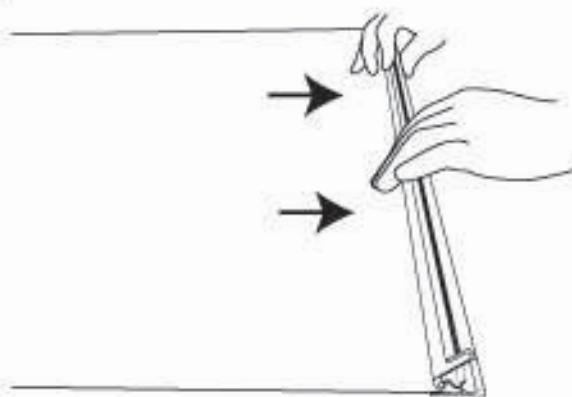
**With Snap Profile**

**(P.1)**

1. Open the snap profile near the end without any tools.



2. Insert the graphic into the profile and press hard.



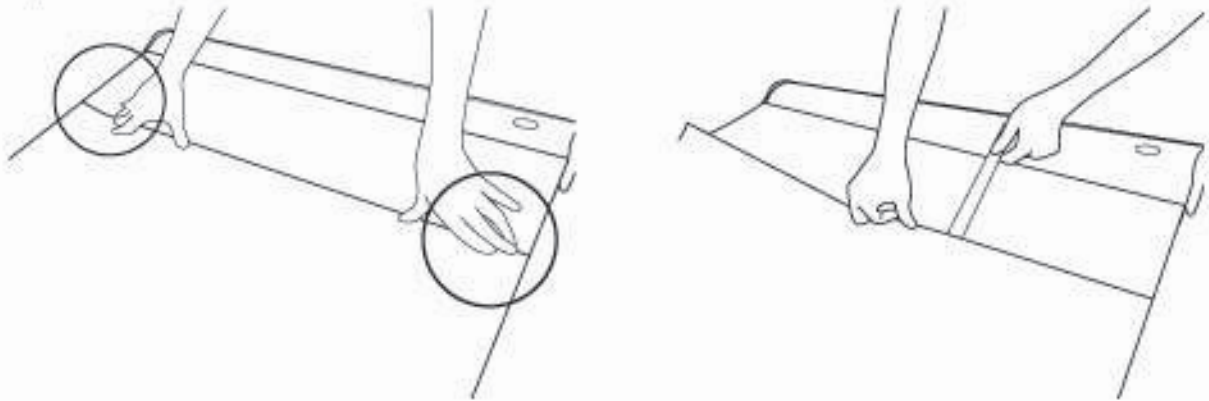
# **MOUNTING GRAPHIC**

---

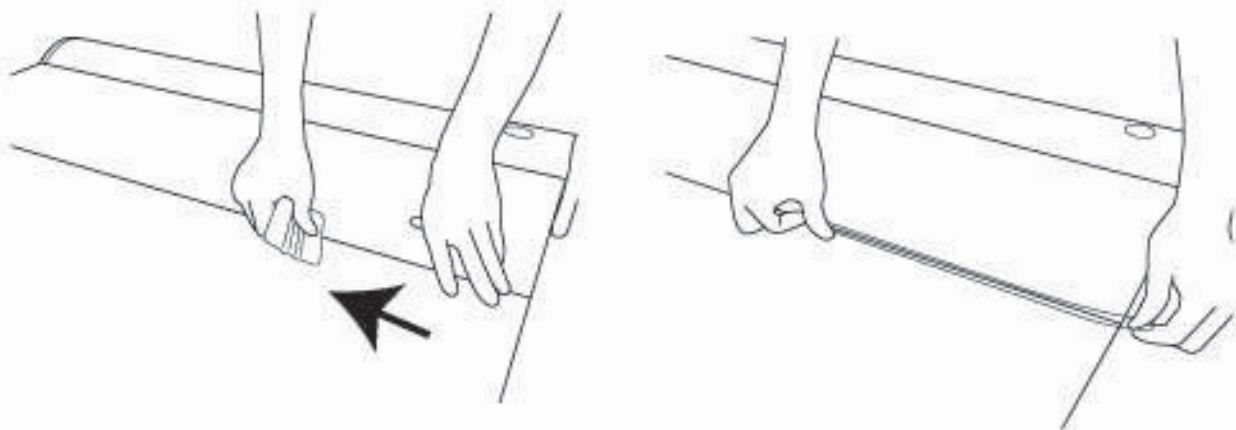
---

**(P.2)**

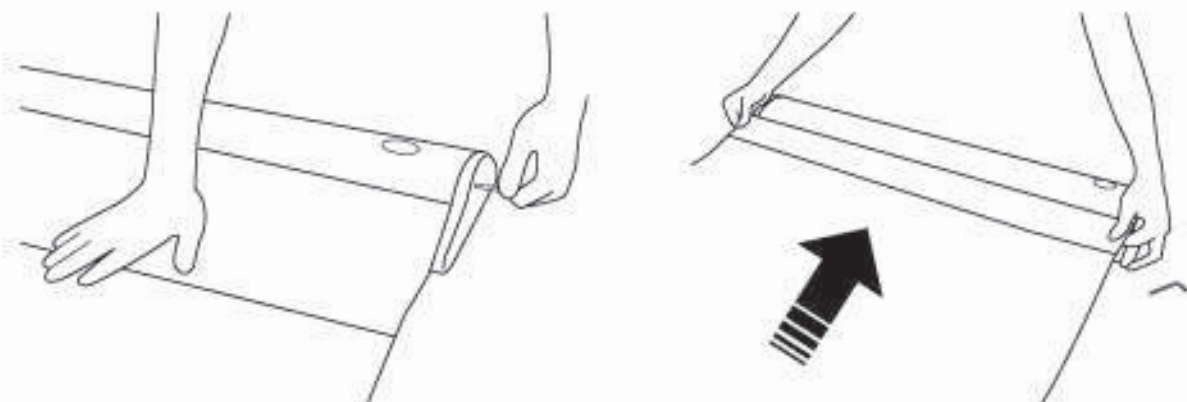
- 3.** Attach the bottom of the graphic by aligning it with the adhesive tape on the white PVC.



- 4.** Press the graphic firmly and apply extra tape for reinforcement.



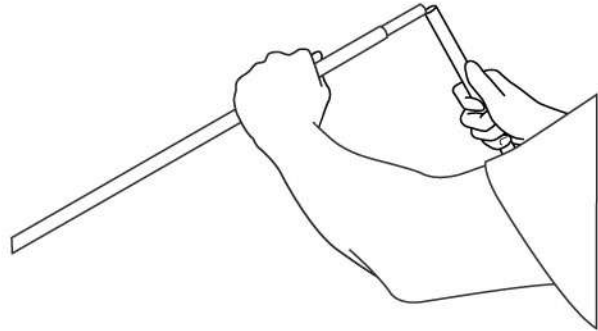
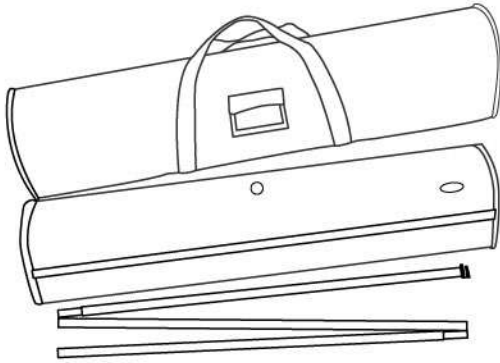
- 5.** Hold the graphic while removing the key. Let the graphic retract into the base slowly.



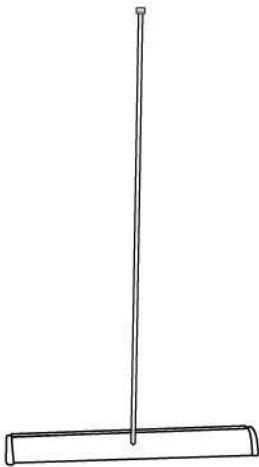
# SET UP INSTRUCTION

## 3 - Parted Pole

1. Unfold the 3-parted pole.



2. Insert the pole onto the cup of the base.



3. Pull up the graphic and position the plastic end tip of the pole into the top profile.

